

WS-1/10/100

WINGSCALER



Weighing capacity WS-1 : 0.1 ~ 1kg/h
WS-10 : 1 ~ 10kg/h
WS-100 : 10 ~ 120kg/h

- Application : Secondary battery material such as Li-ion battery, positive-electrode and negative-electrode material
Powdery material in the food industry
Additives in the plastic molding, etc.



WS-1



WS-10



WS-100

WINGSCALER

- Screws and Blades are selected among various types to suit the characteristics of powder material for high accurate weighing.
- Specially designed screws and blades control pulsation, and equalize material density for feeding evenly to the belt conveyors.
- Basket type wheel agitator prevent the bridge of high cohesive powder material, and the upper agitator reduce powder pressure change for stable feedings. Screw in agitator can be easily detached for cleaning.
- Screw can be easily detached for cleaning by clamp type screw trough without any tools.

Features of feeding blade

WS-1

S8-F16

Middle compression

Metallic powder



WS-100

LC8-F64

Low compression

Inorganic compound



* WS-100

S8-F64

Middle compression

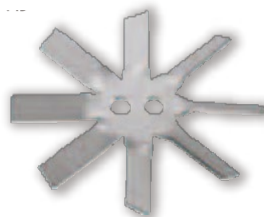
Lithium iron phosphate Flour



LC8-C64

Low compression

Coil screw



Type code

LC 8 - F 64

① ② ③ ④

①: Alphabetic code

LC → Low compressive

S → Standard

HC → High compressive

HD → High dispersive

②: Number of blade

③: Screw type

F → Full fringed

C → Coil

④: Screw diameter

WS-10

S8-F24

Middle compression

Lithium iron phosphate
Plastic additives



HD12-F24

Middle compression

Powder feedings
and spraying on moving
products on the belt conveyor



S8-C64

Middle compression

Coil screw



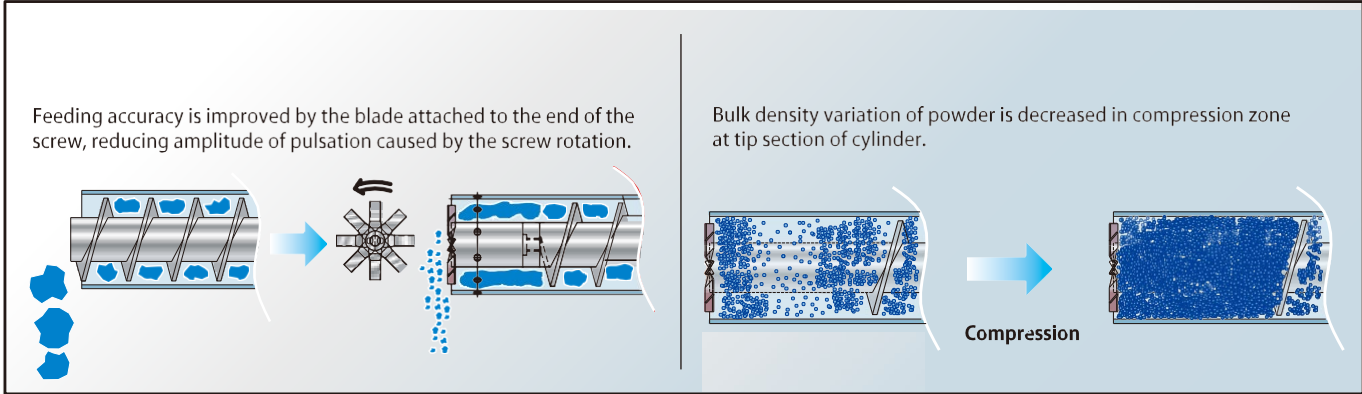
HC8-C64

High compression

PVC powder
Other high fluidity
material



Feature



WS-1

Specifications

Model	WS-1	
Hopper Capacity	(L)	5
Weighing Accuracy*		±4wt%(5g/min) ±4wt%(5g/min Range)
Minimum Mass Indication	(g)	0.1
Weight	(kg)	20

Based on our measurement of iron phosphate.

WS-10/100

Specifications

Model	WS-10		WS-100
Hopper Capacity	(L)	9	20
Weighing Accuracy*		±1.8wt% (0.1kg/min時) ±1.8wt% (0.1kg/min Range)	±0.5wt% (1.0kg/min) ±0.5wt% (1.0kg/min Range)
Minimum Mass Indication	(g)	1	1
Weight	(kg)	27	40

Based on our measurement of iron phosphate.

Improved cleanability. No special tools are required.

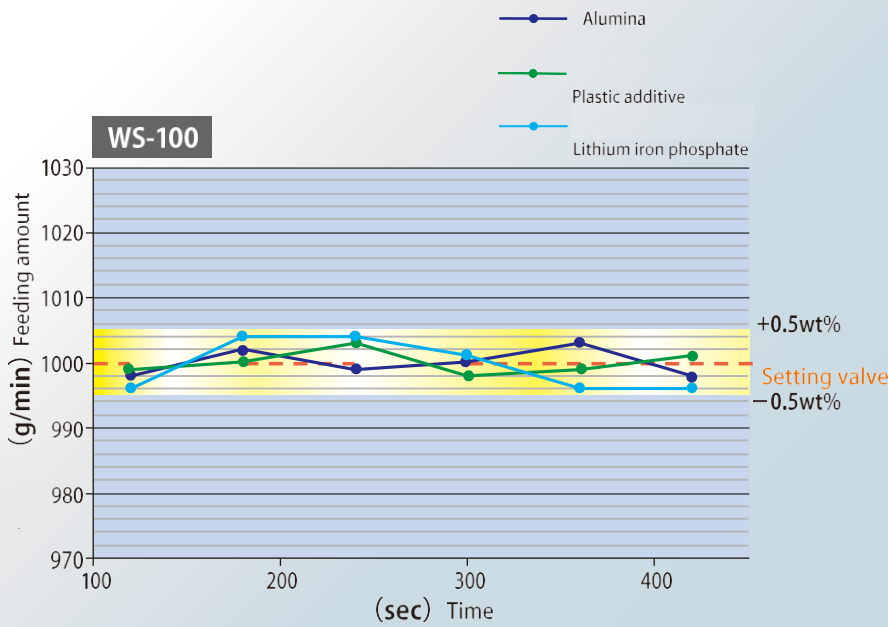


Basket type wheel agitator for bridge prevention can be easily detached by turning it backward.



Screw trough can be released with lever. Screw can be easily detached by turning it backward.

Weighing test result



Special specifications

**Conical hopper
Agitator specifications**



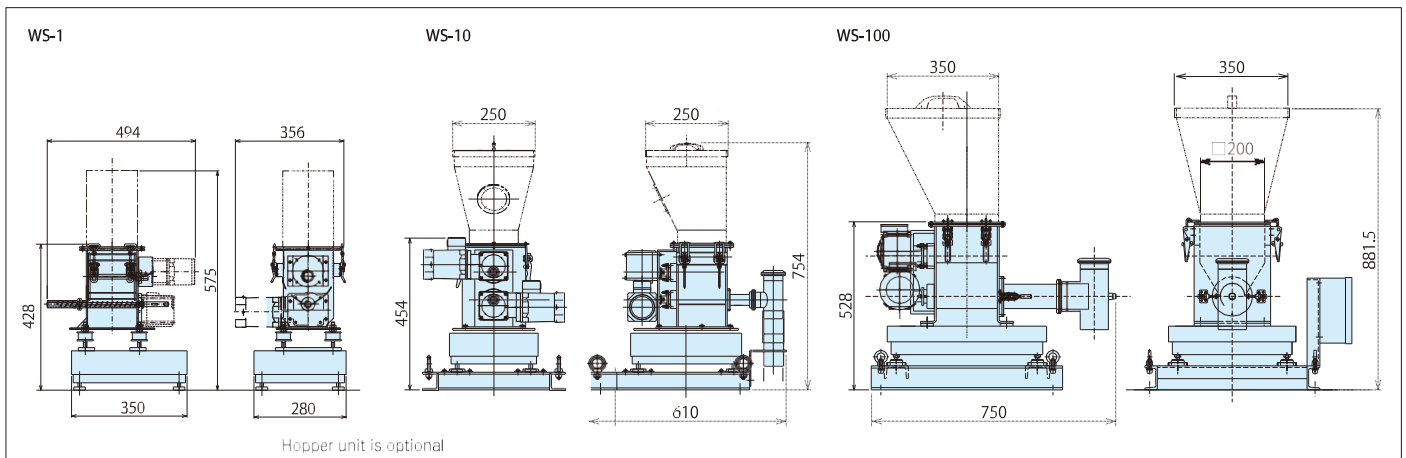
Hopper unit is optional

WS-100S

**Cut out blades
Separate drive
specifications by
screw body**



Outline Dimensions



*These specifications are subject to change without notice
*Please read the instruction manual carefully before use.



KAWATA U.S.A., INC.

WWW.KAWATA-USA.COM

Total Systems Engineer

KAWATA MFG. CO., LTD.

HEAD OFFICE /Phone.81-6-6531-8211 Fax.81-6-6531-8216

SALES OFFICE

CHINA KAWATA MACH. MFG. (SHANGHAI) CO., LTD.
 Shanghai Office /Phone.86-21-6289-8989
 Dalian Office /Phone.86-411-8753-8921
 Tianjin Office /Phone.86-22-2370-7800
 Shenzhen Office /Phone.86-755-8229-5250
 Guangzhou Office /Phone.86-20-3402-5200

HONG KONG KAWATA MACHINERY (HK) LTD. /Phone.852-3118-1326
 TAIWAN R.O.C. TAIWAN KAWATA CO., LTD. /Phone.886-3-534-1847
 THAILAND KAWATA (THAILAND) CO., LTD. /Phone.66-2-692-1331
 VIETNAM KAWATA (THAILAND) CO., LTD.
 Hanoi Representative Office /Phone.84-4-2225-0155
 Ho Chi Minh Representative Office /Phone.84-8-6290-2503

MALAYSIA KAWATA MARKETING SDN. BHD. /Phone.60-6-765-6628
 SINGAPORE KAWATA PACIFIC PTE. LTD. /Phone.65-6286-8817
 INDONESIA PT. KAWATA MARKETING /Phone.62-21-5790-0852
 INDONESIA

PHILIPPINES KAWATA THAILAND CO., LTD. REPRESENTATIVE Office
 /Phone.63-2-681-6174

INTERNATIONAL DIVISION /Phone.81-6-6531-2914 Fax.81-6-6531-8216

(U.S.A.) KAWATA U.S.A., INC.
 (INDIA) PREVISION WORLD (INDIA) PVT. LTD.
 Delhi Office /Phone.91-11-4653-8972 Chennai Office /Phone.91-44-4273-8662
 Pune Office /Phone.91-20-6510-4700
 (MEXICO) KAWATA-MACHINERY MEXICO S.A. DE C.V. /Phone.52-442-277-4679

PLANT
 (CHINA) KAWATA MACH. MFG. (SHANGHAI) CO., LTD. /Phone.86-21-6289-8989
 (INDONESIA) PT. KAWATA INDONESIA /Phone.62-21-8964-4560